



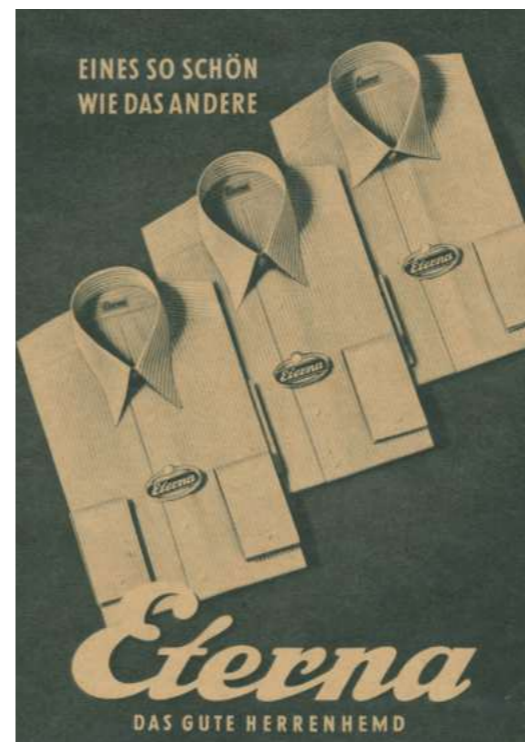
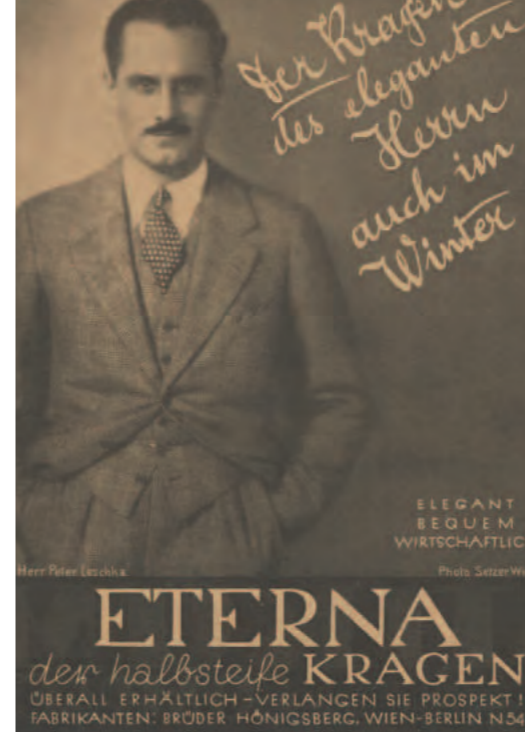
ET ER NA

CORPORATE FASHION

Our history spans more than 160 years, our passion is shirts and blouses and our corporate philosophy is clearly defined.

We live our values.
We follow our vision.

Read more:





We take
responsibility.

Environment

Throughout the entire life cycle of our shirts and blouses, we endeavour to keep our **carbon footprint as small as possible**. We avoid monocultures when we source our cotton, we pay attention to the **quality of waste water** in textile finishing and we optimise transport routes to avoid unnecessary emissions.

People

ETERNA **takes responsibility** for all the people involved in the manufacturing process of our shirts and blouses – regardless of the country they work in. We regard **fair working conditions**, occupational safety, regular working hours and social benefits as basic rights and as a matter of course. We do not tolerate discrimination, child labour or forced labour.

Future

ETERNA's sustainable principles are fixed in **our company policy** and our environmental policy. All employees have to state their commitment to these guidelines. Our **business partners** have to accept our supplier code of conduct to confirm their **sustainable and responsible way of working**.

Resources

We aim to handle resources consciously, meaningfully and sparingly. Our motto is: **reduce, re-use, recycle**. Wherever possible, we use recycled products in order to give leftover cotton, paper or cardboard a second life. At present, we're successively replacing plastics with renewable and reusable recycled materials.

Transparency

ETERNA fosters long-term, **close relationships** with its suppliers. These relationships are built on trust. Because close cooperation is required in order to ensure **supply chains are seamlessly certified**. The value chains for shirts and blouses which bear the MADE IN GREEN by OEKO-TEX® product label are **fully transparent**.



Sustainability is not a fashion trend.

As far back as 2000, ETERNA was the **world's first manufacturer** of men's shirts, business clothing and blouses to receive the **highest OEKO-TEX® certification**, which today equals the product label MADE IN GREEN by OEKO-TEX®. We've also **disclosed our entire value chain** since 2015. This is available for anyone - you can trace your product without gaps using the EAN code.

Also, we support a **large variety of sustainability projects** and initiatives like the Better Cotton Initiative, myclimate, Green Button, TEXAID and many more.



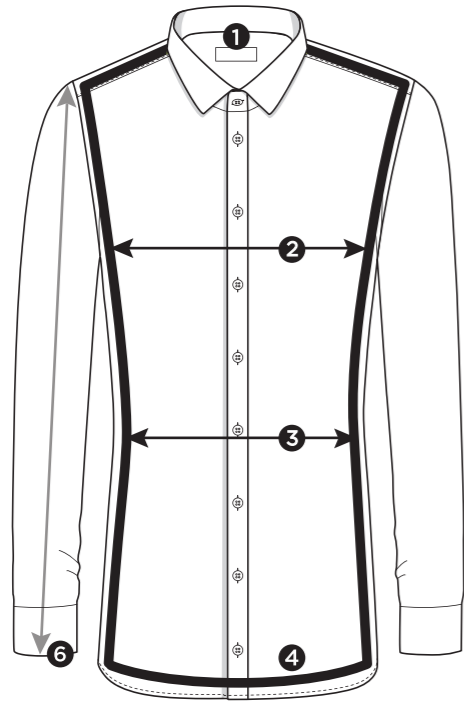
eterna-naturally.com

#NATURALLY

seals the beliefs and values of ETERNA: highest quality, sustainability and fair production.

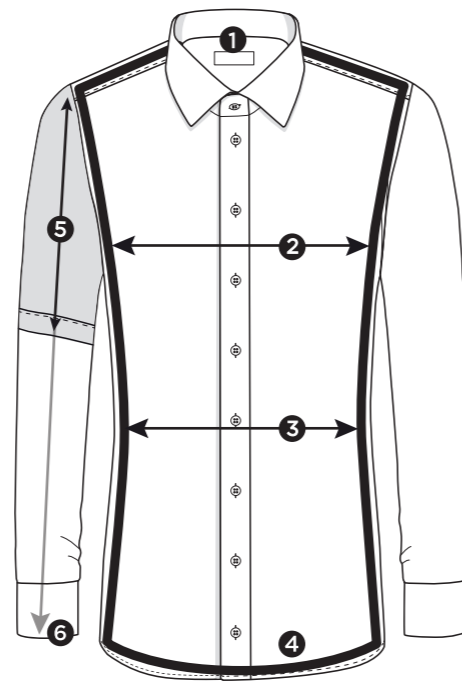
Super Slim

Figure-Hugging.



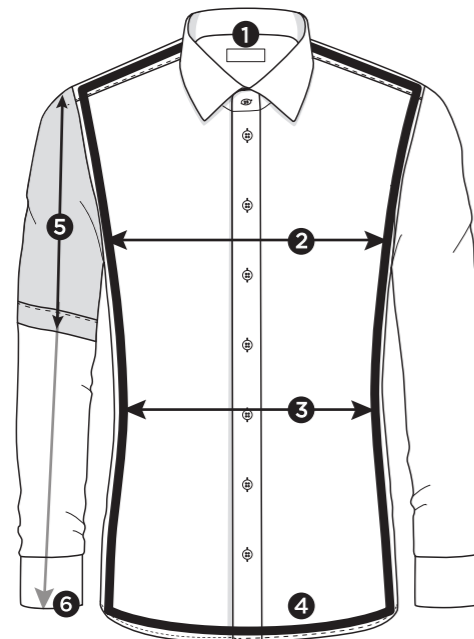
Slim Fit

Narrow Fit.



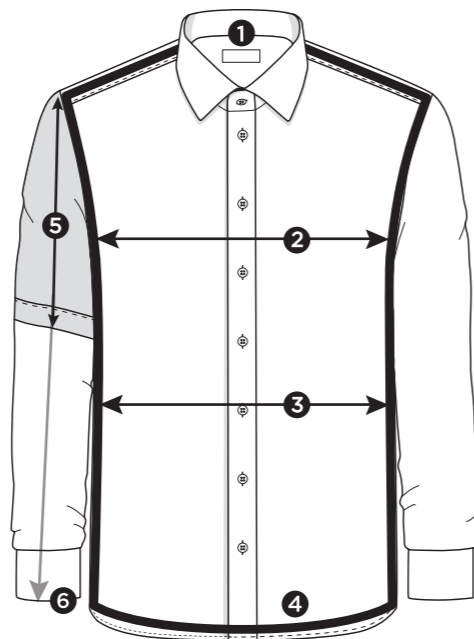
Modern Fit

Modern Fit.



Comfort Fit

Comfortable Fit.



Standard Measurement Chart

1	Collar sizes	cm	inch	36	37/38	39/40	41/42	43/44	45/46	47/48	49/50	52	54
				14	14½/15	15½/15¾	16/16½	17/17½	17¾/18	18½/19	19¼/19½	20½	21¼
2	Chest measurement	COMFORT FIT			112	120	128	134	148	154	160	168	176
		MODERN FIT			110	116	122	132	138	146			
		SLIM FIT			102	110	116	124	134				
		SUPER SLIM	98		102	110	116	124					
3	Waist measurement	COMFORT FIT			108	114	124	134	148	154	160	168	176
		MODERN FIT			102	106	114	122	130	138			
		SLIM FIT			92	98	104	112	122				
		SUPER SLIM	79		83	89	95	103					
4	Body length for SL 65	COMFORT FIT			80	80	80	82	90	90	95	95	95
		MODERN FIT			80	80	80	82	85	90	90	95	95
	Body length for SL 59	COMFORT FIT			80	80	80	80	80	80	80	80	80
		MODERN FIT			80	80	80	80	80	80	80	80	80
	Body length for SL 67	SLIM FIT			80	80	80	82	85				
		SUPER SLIM	80		80	80	80	82					
	Body length for SL 68	COMFORT FIT			85	85	85	85	90	90	95	95	95
		MODERN FIT			85	85	85	85	90	90	90	95	95
	Body length for SL 70 ¹	SLIM FIT			85	85	85	85	85				
	Body length for SL 72	COMFORT FIT			90	90	90	90	90	90	95	95	95
		MODERN FIT			90	90	90	90	90	90	90	95	95
5	Short sleeve (1/2)	COMFORT FIT			28	28	28	28	30	30	30	30	30
		MODERN FIT			27	27	27	28	30	30			
		SLIM FIT			24	24	24	24	26				
6	Cuff length	COMFORT FIT			26	26	26	28	28	28	30	30	30
		MODERN FIT			26	26	26	28	28	28			
		SLIM FIT			26	26	26	26	28	28			
		SUPER SLIM	26		26	26	26	26	28				

¹ available from Spring/Summer 2024.

the measurements apply to the finished products



Our Blouses. Our Fits.

Blouses are basics and trend pieces at the same time. In order to develop their full potential, however, they must fit perfectly and be tailored to the individual figure, personal style and occasion. Therefore, we provide four different fits.

FIT

Loose

A **casual silhouette** is typical for loose fit blouses. **More width in the stomach and waist area** gives the blouse a **slight A-shape**. Loose-fit blouses are perfect for women who prefer a **looser fit**.



FIT

Regular

Regular fit stands for **close-fitting** and at the same time **comfortable** blouses that **flatter the female silhouette** without constricting it. Thanks to their modern fit, they sit casually and offer optimal **wearing comfort**.



FIT

Fitted

Fitted blouses are **particularly figure-hugging**: their **tailored cut** perfectly accentuates a **narrow silhouette**.



Standard Measurement Chart

D282 Regular		34	36	38	40	42	44	46	48	50	52	54
Oberweite	chest measurement	96	100	104	108	112	117	122	129	135	-	-
Taillenweite	waist measurement	82	86	90	94	100	106	112	119	126	-	-
Hüftweite	hip measurement	102	106	110	114	119	124	129	136	143	-	-
Rückenlänge	body length	66	66	66	66	68	68	71	71	71	-	-

D708/H708 Regular		34	36	38	40	42	44	46	48	50	52	54
Oberweite	chest measurement	96	100	104	108	112	117	122	129	135	-	-
Taillenweite	waist measurement	86	90	94	98	104	110	116	123	130	-	-
Hüftweite	hip measurement	102	106	110	114	119	124	129	136	143	-	-
Rückenlänge	body length	66	66	66	66	68	68	71	71	71	-	-

D790/H790 Regular		34	36	38	40	42	44	46	48	50	52	54
Oberweite	chest measurement	94	98	102	106	111	116	121	128	135	142	149
Taillenweite	waist measurement	82	86	90	94	102	108	114	122	128	138	145
Hüftweite	hip measurement	98	102	106	110	116	120	124	130	136	142	148
Rückenlänge	body length	65	65	65	65	65	65	68	68	68	68	68

D791 Regular		34	36	38	40	42	44	46	48	50	52	54
Oberweite	chest measurement	94	98	102	106	111	116	121	128	135	-	-
Taillenweite	waist measurement	82	86	90	94	102	108	114	122	128	-	-
Hüftweite	hip measurement	100	104	108	112	118	122	126	132	138	-	-
Rückenlänge	body length	65	65	65	65	67	67	70	70	70	-	-

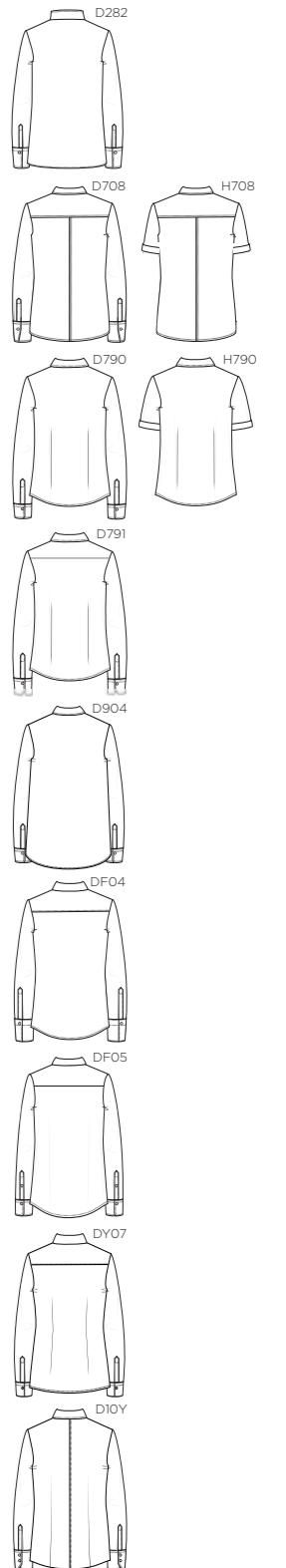
D904 Loose		34	36	38	40	42	44	46	48	50	52	54
Oberweite	chest measurement	94	98	102	106	111	116	121	128	135	-	-
Taillenweite	waist measurement	-	-	-	-	-	-	-	-	-	-	-
Hüftweite	hip measurement	108	112	116	120	126	130	134	140	147	-	-
Rückenlänge	body length	78	78	78	78	80	80	80	80	80	-	-

DF04 Fitted		34	36	38	40	42	44	46	48	50	52	54
Oberweite	chest measurement	93	97	101	105	109	114	119	-	-	-	-
Taillenweite	waist measurement	85	89	93	97	101	106	111	-	-	-	-
Hüftweite	hip measurement	101	105	109	113	117	122	127	-	-	-	-
Rückenlänge	body length	68	68	68	68	70	70	70	-	-	-	-

DF05 Fitted		34	36	38	40	42	44	46	48	50	52	54
Oberweite	chest measurement	90	94	98	102	107	112	117	-	-	-	-
Taillenweite	waist measurement	82	86	90	94	99	104	109	-	-	-	-
Hüftweite	hip measurement	99	103	107	111	115	120	125	-	-	-	-
Rückenlänge	body length	66	66	66	66	68	68	68	-	-	-	-

DY07 Fitted Slim		34	36	38	40	42	44	46	48	50	52	54
Oberweite	chest measurement	92	96	100	104	110	116	-	-	-	-	-
Taillenweite	waist measurement	75	79	83	87	95	101	-	-	-	-	-
Hüftweite	hip measurement	97	101	105	109	115	119	-	-	-	-	-
Rückenlänge	body length	66	66	66	66	68	68	-	-	-	-	-

D10Y Fitted Slim		34	36	38	40	42	44	46	48	50	52	54
Oberweite	chest measurement	94	98	102	106	111	116	-	-	-	-	-
Taillenweite	waist measurement	76	80	84	88	96	102	-	-	-	-	-
Hüftweite	hip measurement	98	102	106	110	116	120	-	-	-	-	-
Rückenlänge	body length	66	66	66	66	68	68	-	-	-	-	-



The measurements apply to the finished products



Best in Class Qualities

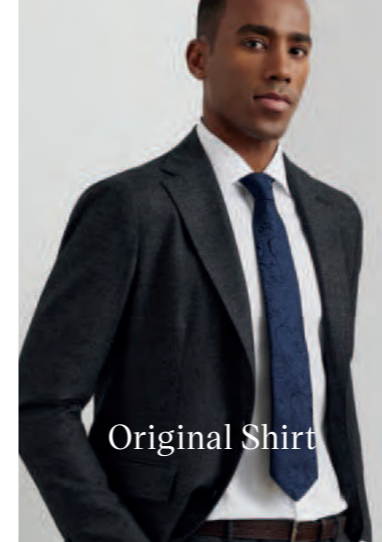
The essence of our passion:
These masterful qualities, perfected over
decades, fulfill properties for occasions
and individual wishes.

THE CORE COMPETENCE OF ETERNA

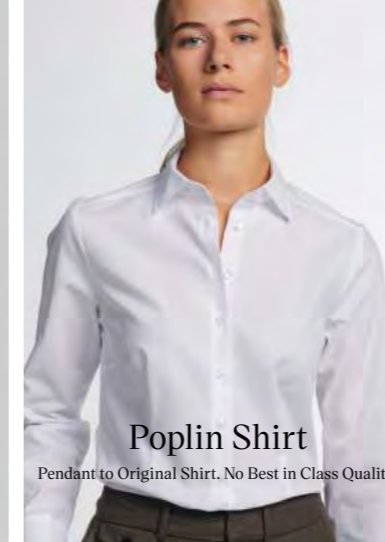
Best in Class Qualities

For every situation, for every occasion:
ETERNA Best in Class qualities guarantee
you the **best materials, highest wearing
comfort and excellent care properties.**

Best in class qualities are **masterful
ETERNA fabric qualities** that have been
perfected over decades.

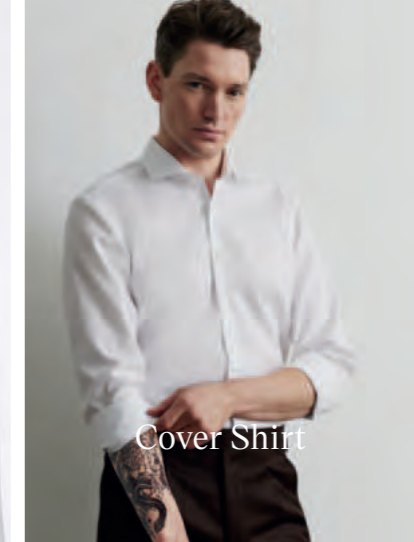


Original Shirt



Poplin Shirt

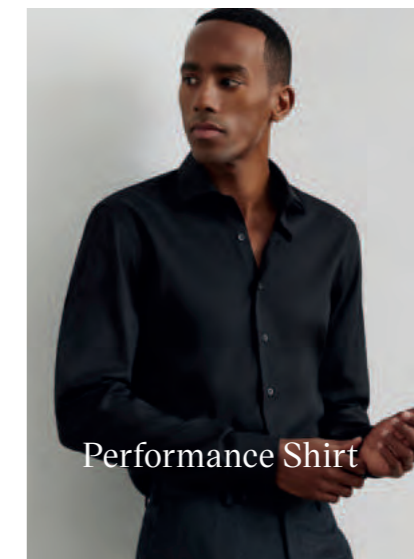
Pendant to Original Shirt. No Best in Class Quality.



Cover Shirt



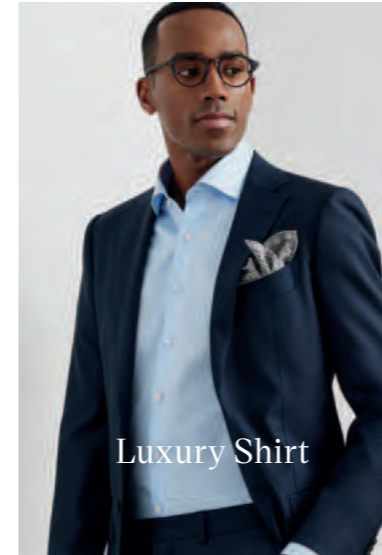
Cover Shirt



Performance Shirt



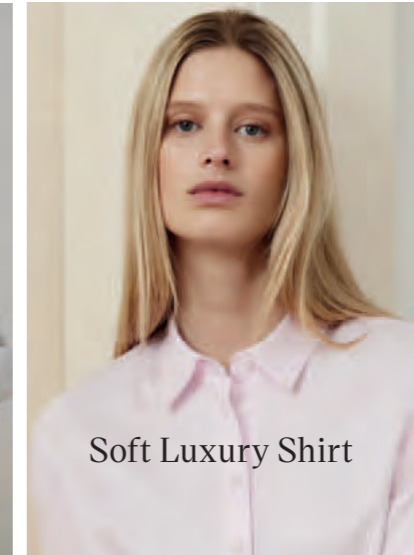
Performance Shirt



Luxury Shirt



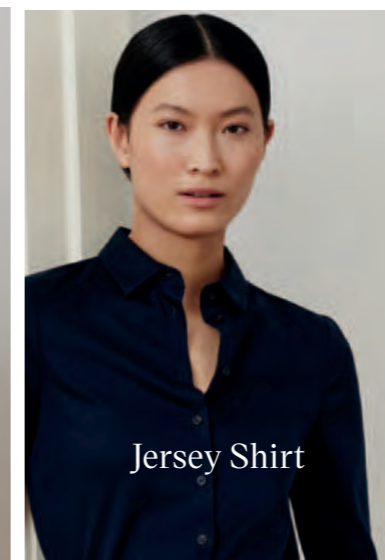
Soft Luxury Shirt



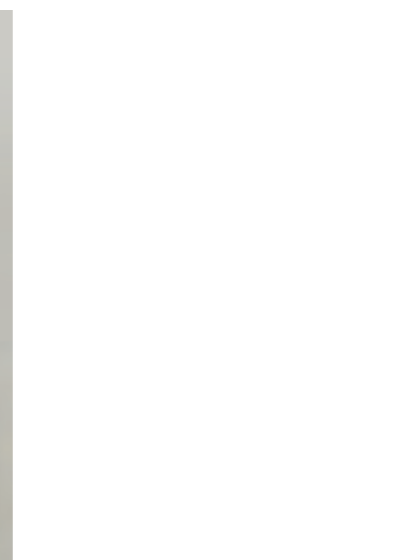
Soft Luxury Shirt



Jersey Shirt



Jersey Shirt



Satin Shirt



Original Shirt

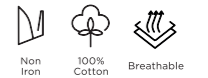
Light, smooth and non-iron.
The unsurpassed original,
timelessly modern and always
the right choice.



Original Shirt

Poplin. The non-iron shirt.

100% cotton
opacity: medium
129 g/m²

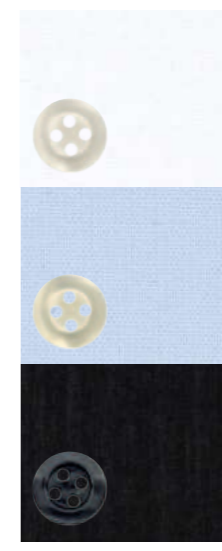


Kent Collar

Price **2**

Slim Fit

37-46
¹ 37-44



- white 110000-F170-67cm
- blue 110010-F170-67cm¹
- black 110039-F170-67cm¹

Kent Collar

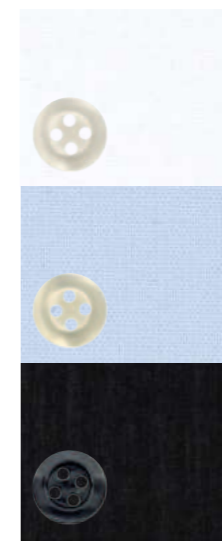
Price **2**

Modern Fit

37-46, 48
⁴ 38-46, 48

Comfort Fit

38-50, 52, 54
² 39-50, 52, 54
³ 40-50, 52, 54



- white 110000-X19K-65cm
110000-X18K-65cm
110000-C19K-27cm
- blue 110010-X19K-65cm
110010-C19K-27cm
- black 110039-X19K-65cm
110039-C19K-27cm
sleeve length
110039-X19K-68cm⁴

- 110000-E19K-65cm
110000-E17K-65cm
110000-K19K-27cm²
- 110010-E19K-65cm²
110010-K19K-27cm²
- 110039-E19K-65cm³
110039-K19K-27cm²

with pocket

1/2-Arm

C19K and K19K are only available from 01.01.24 (previously models C187 and K198).



Poplin Shirt

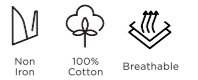
Pendant to Original Shirt. No Best in Class Quality.



Poplin Shirt

Poplin. The non-iron shirt.

100% cotton
opacity: medium
129 g/m²



Price **6** H790 Price **3**

Regular
34-54



white 522000-D790-614-63cm
522000-H790-614-26cm

1/2-Arm

Poplin Stretch Shirt

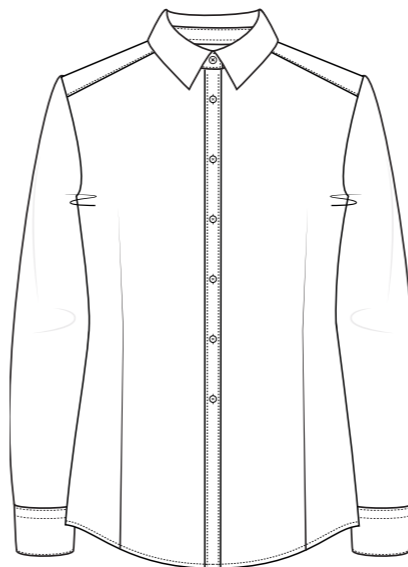
Poplin Stretch. The non-iron shirt.

97% cotton
3% elastodiene
opacity: light
106 g/m²



Price **6**

Fitted
34-44

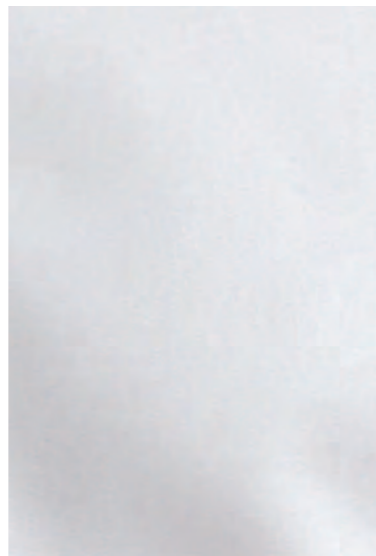
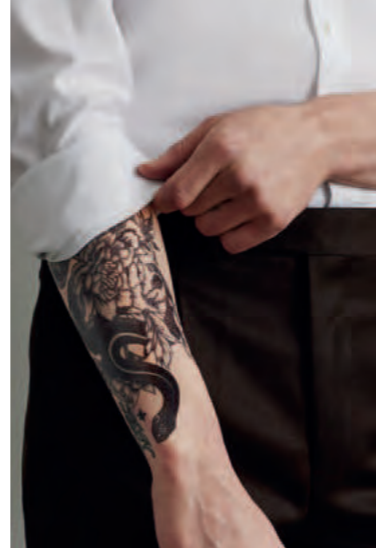


white 538500-DY07-614-63cm



Cover Shirt

Opaque, crisp and non-iron.
 Conceals everything a man doesn't
 want to show. The choice that goes
 with everything. Stylish every time.



Cover Shirt

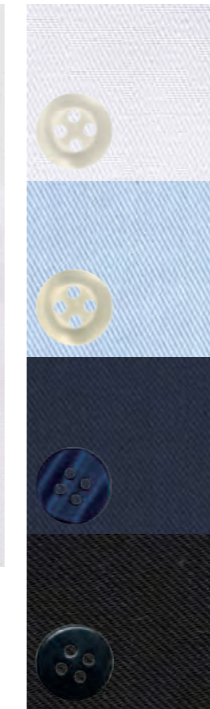
Twill. The opaque innovation.

100% cotton
 opacity: very high
 157 g/m²



Cutaway Collar

Price **6**



white	881700-Z182-67cm
blue	881710-Z182-67cm
navy	
black	881739-Z182-67cm

Super Slim
 36-44

Slim Fit
 38-44

¹ sizes 38-46
² sizes 38-46, sl: 72cm 2023; 70cm from 2024

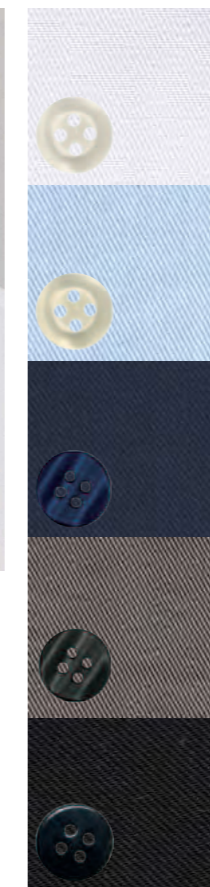
881700-F182-67cm¹
 sleeve length
 881700-F182-70cm²

881710-F182-67cm¹

881719-F182-67cm

881739-F182-67cm¹

Kent Collar



white	881700-X18K-65cm 881700-C19K-27cm <input type="checkbox"/> ^{1/2} sleeve length 881700-X18K-59cm 881700-X18K-68cm 881700-X18K-72cm
blue	881710-X18K-65cm 881710-C19K-27cm <input type="checkbox"/> ^{1/2} sleeve length 881710-X18K-68cm 881710-X18K-72cm
navy	881719-X18K-65cm
grey	881735-X18K-65cm
black	881739-X18K-65cm

Modern Fit
 38-46, 48

Comfort Fit
 40-48

¹ sizes 40-50, 52, 54
² sizes 39-48

881700-E19K-65cm¹
 sleeve length
 881700-E19K-59cm²
 881700-E19K-68cm
 881700-E19K-72cm

881710-E19K-65cm¹
 sleeve length
 881710-E19K-68cm

881719-E19K-65cm

881735-E19K-65cm¹

881739-E19K-65cm

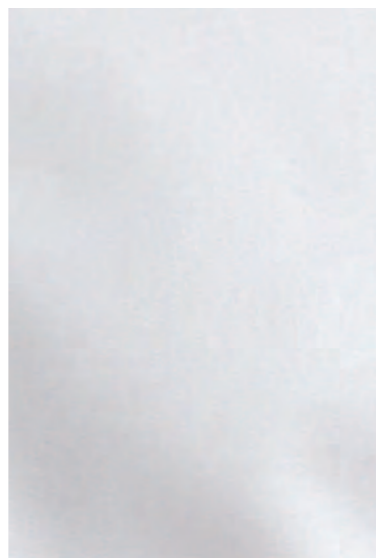
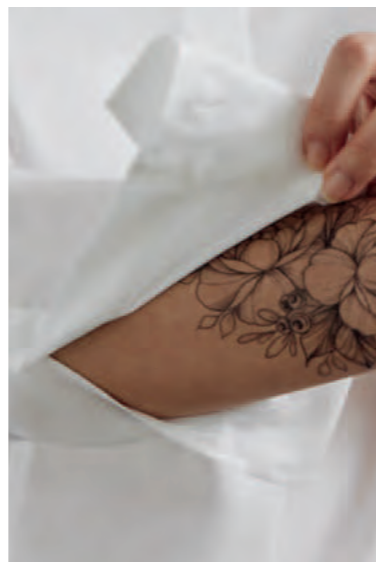
with pocket

1/2-Arm



Cover Shirt

Opaque, high-quality and easy-iron.
 For an impeccable business look.
 Always elegant and stylish every time.



Cover Shirt

Twill. The opaque innovation.

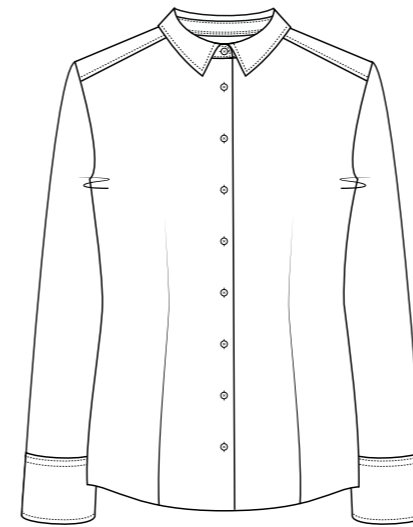
100% cotton
 opacity: high
 116 g/m²



Price **7**

Fitted

34-44

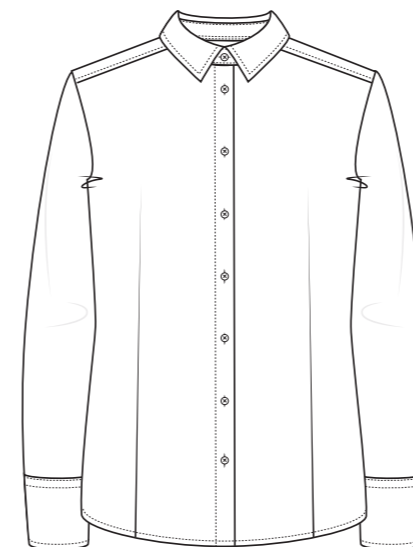


	white	500800-D10Y-63cm
	blue	500810-D10Y-63cm
	black	500839-D10Y-63cm

Price **7**

Regular

34-50



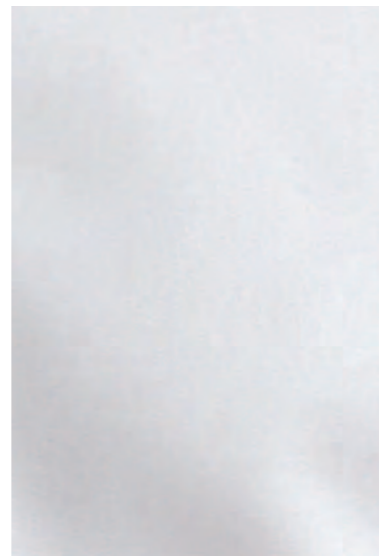
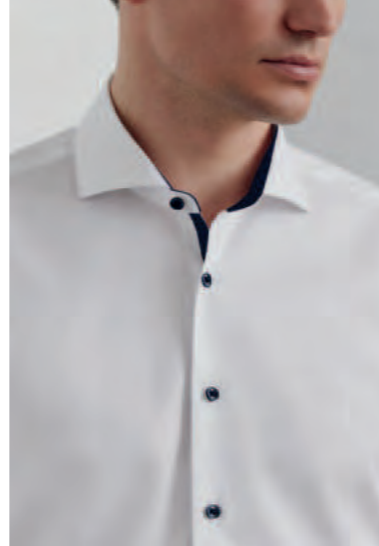
	white	500800-D708-62cm 500800-H708-614-26cm ^{1/2}
	blue	500810-D708-62cm 500810-H708-614-26cm ^{1/2}
	rosé	500850-D708-62cm
	black	500839-D708-62cm 500839-H708-614-26cm ^{1/2}

^{1/2} 1/2-Arm



Cover Shirt

Contrast Details Navy



Cover Shirt

Twill. Contrast details navy.

100% cotton
opacity: very high
157 g/m²

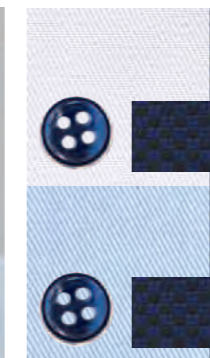
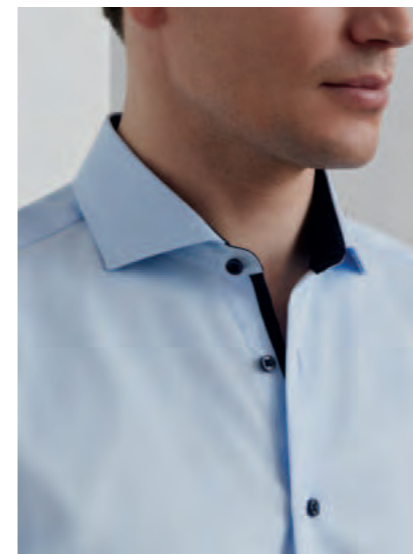


Cutaway Collar

Price **7**

Slim Fit

38-44



white 881900-F142-67cm

blue 881910-F142-67cm

Cutaway Collar

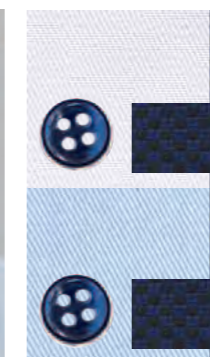
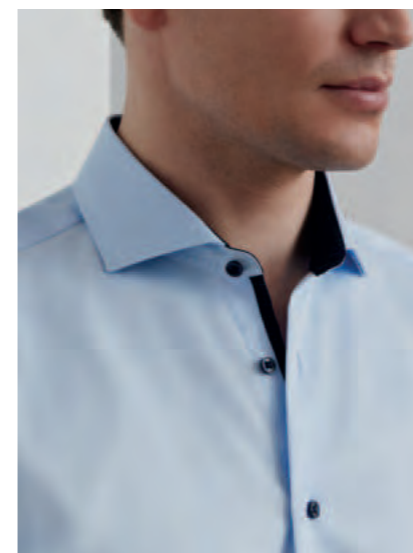
Price **7**

Modern Fit

38-46, 48

Comfort Fit

40-50, 52, 54
¹ sizes 40-48



white 881900-X15V-65cm

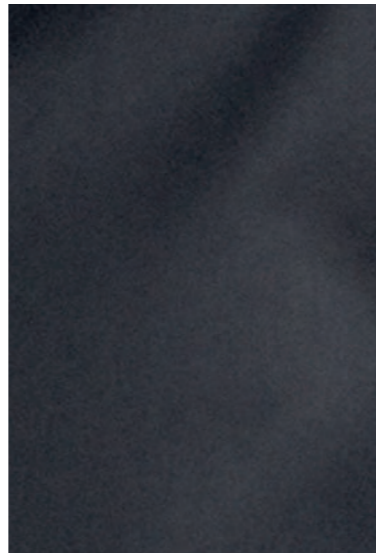
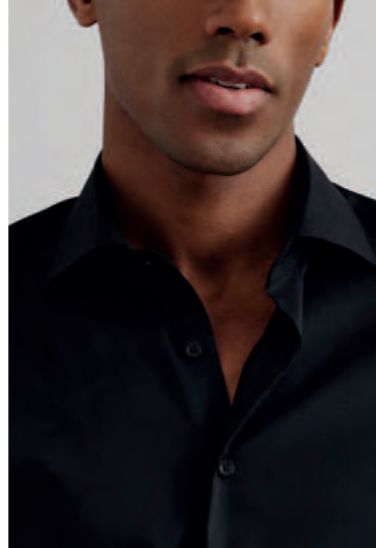
blue 881910-X15V-65cm

881900-E15V-65cm

881910-E15V-65cm¹

Performance Shirt

Particularly stretchy and high-performance. Flexibility. Anytime. Anywhere. For an active lifestyle.



Performance Shirt

Stretch Twill. Extremely flexible.

70% lyocell
26% polyamide
4% elastane
opacity: medium
117 g/m²



Kent Collar

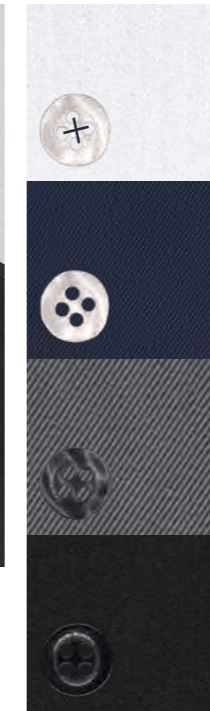
Price **7**

Slim Fit

38-44

Modern Fit

38-46, 48



white **337700-F170-67cm**

337700-X18K-65cm

navy **337719-F170-67cm**

337719-X18K-65cm

grey **337735-F170-67cm**

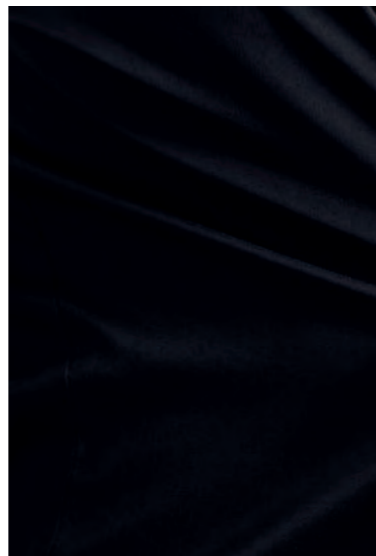
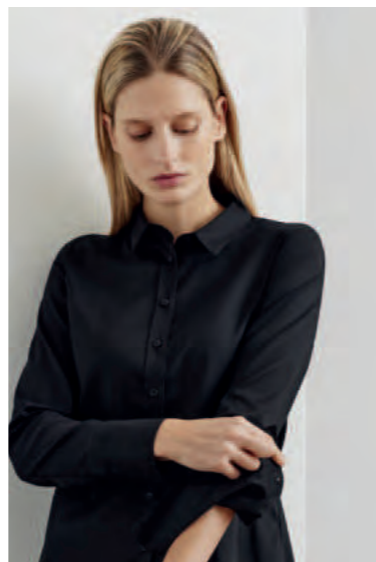
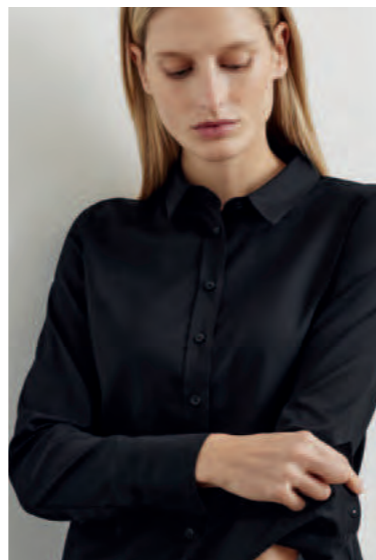
337735-X18K-65cm

black **337739-F170-67cm**

337739-X18K-65cm

Performance Shirt

Maximum freedom thanks to stretch fabric.
Flexibility all the time.
For an active lifestyle.



Performance Shirt

Stretch Twill. Extremely flexible.

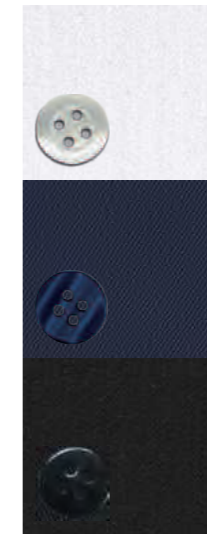
70% lyocell
26% polyamide
4% elastane
opacity: medium
117 g/m²



Price **10**

Fitted

34-46



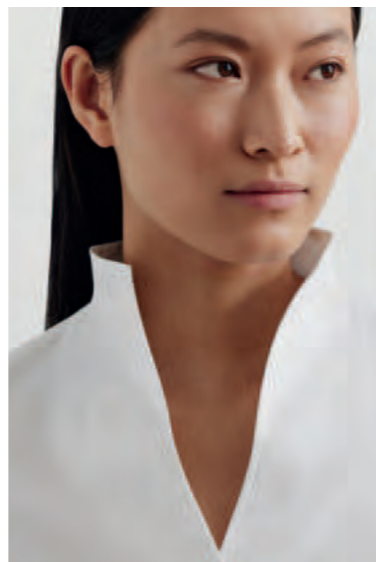
white **537700-DF04-63cm**

navy **537719-DF04-63cm**

black **537739-DF04-63cm**

Satin Shirt

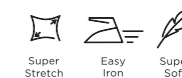
Smooth with a fine shimmer.
The elegant must-have for feminine
business looks and stylish appearances.



Satin Shirt

The fine cotton quality.

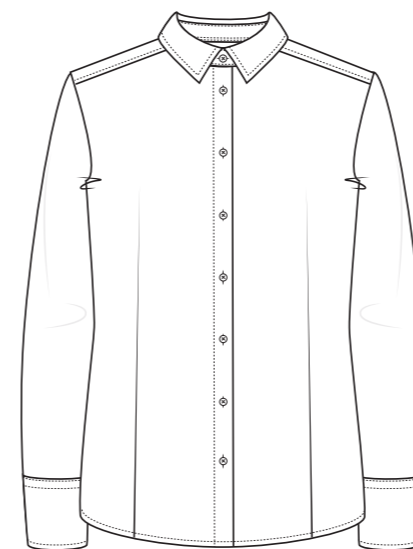
95% cotton
5% elastodiene
opacity: high
110 g/m²



Price **8**

Regular

34-50

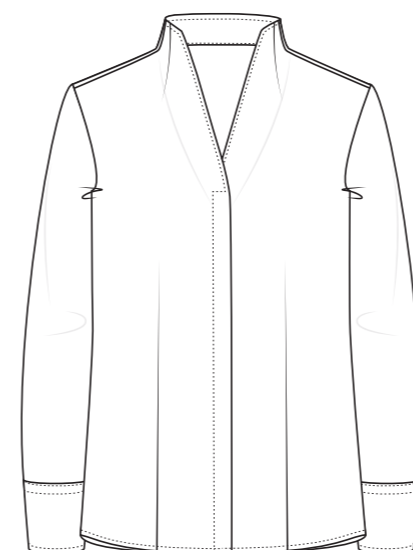


	white	535200-D708-62cm
	rosé	535285-D708-62cm
	blue	535212-D708-62cm
	navy	535219-D708-62cm

Price **8**

Regular

34-50



	white	535200-D282-63cm
	navy	535219-D282-63cm



Luxury Shirt

Soft feel, smooth texture
and a fine shimmer.
The stylish choice for a clean,
elegant premium look.

1863
by
ETERNA



Luxury Shirt

Twill. The Premium Gentle Shirt.

100% cotton
opacity: high
116 g/m²



Kent Collar

Price **8**

Slim Fit

38-46



	white	800500-F682-67cm
	blue	800510-F682-67cm
	navy	800518-F682-67cm
	black	800539-F682-67cm

Kent Collar

Price **8**

Modern Fit

38-46, 48

Comfort Fit

40-50



	white	800500-X687-65cm	800500-E687-65cm
	blue	800510-X687-65cm	800510-E687-65cm
	navy	800518-X687-65cm	
	black	800539-X687-65cm	

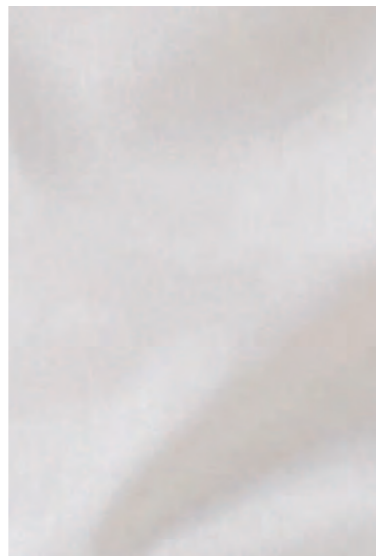
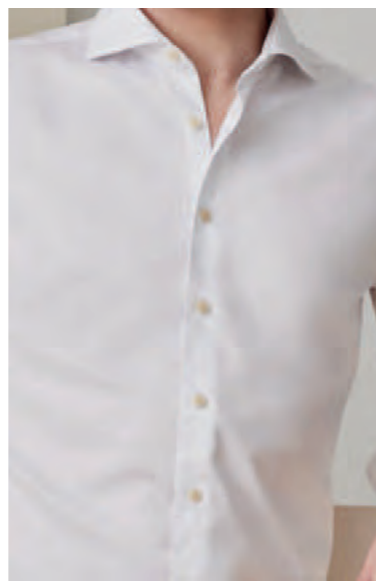
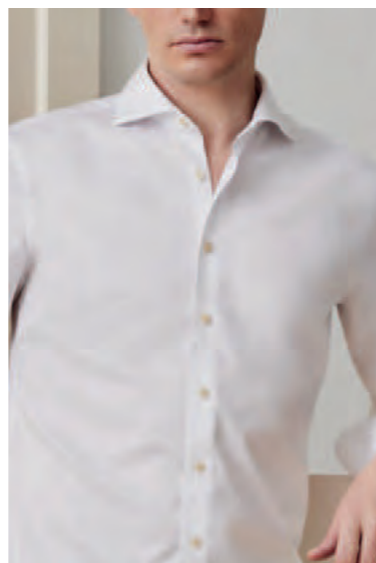
More colours at WWW.CF.ETERNA.DE



Soft Luxury Shirt

The premium shirt for a relaxed look, soft feel and perfect wearing comfort. The new way to wear shirts.

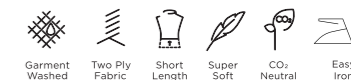
1863
by
ETERNA



Soft Luxury Shirt

Twill. Luxury for everyday life.

100% cotton
opacity: high
116 g/m²



Cutaway Collar

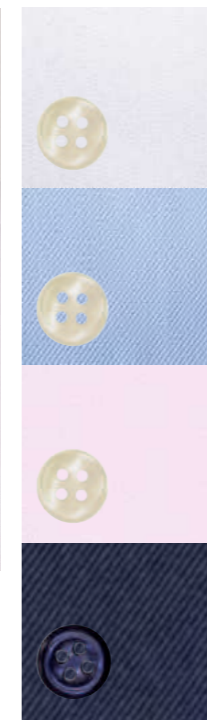
Price **8**

Slim Fit

38-44

Modern Fit

38-46, 48



white 385002-FS82-67cm

385002-XS82-65cm

blue 385010-FS82-67cm

385010-XS82-65cm

rosé 385050-FS82-67cm

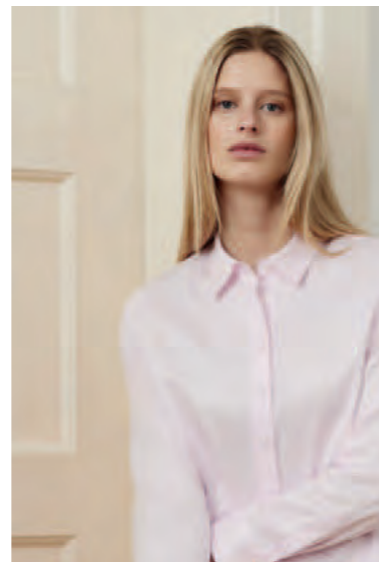
385050-XS82-65cm

navy 385019-FS82-67cm

385019-XS82-65cm

Soft Luxury Shirt

Soft feel, relaxed look and perfect wearing comfort. The relaxed smart casual blouse with a touch of luxury.



Soft Luxury Shirt

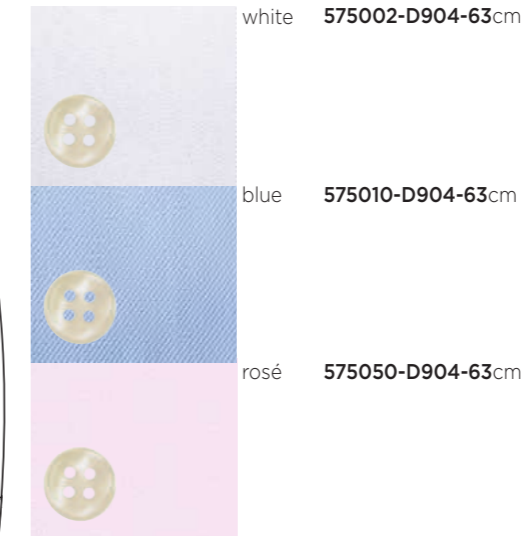
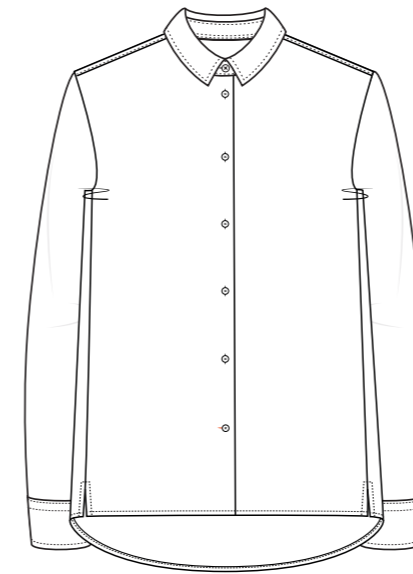
Twill. Perfect balance.

100% cotton
opacity: high
116 g/m²



Price **10**

Loose
34-50



white 575002-D904-63cm

blue 575010-D904-63cm

rosé 575050-D904-63cm

More colours at WWW.CF.ETERNA.DE



Jersey Shirt

Guaranteed to make you feel good:
soft jersey follows your every
move. Comfortable like a T-shirt,
stylish like a business shirt.

1863
by
ETERNA



Jersey Shirt

Soft quality with a relaxed feel.

100% cotton
opacity: high
170 g/m²

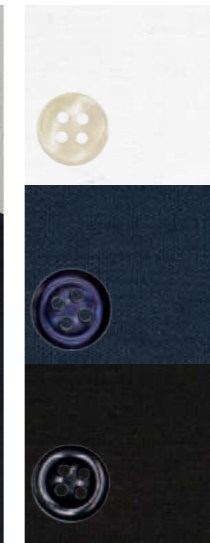


Cutaway Collar

Price **10**

Slim Fit
38-44

Modern Fit
39-46, 48



white 215900-YS82-67cm

215900-JS82-65cm

navy 215919-YS82-67cm

215919-JS82-65cm

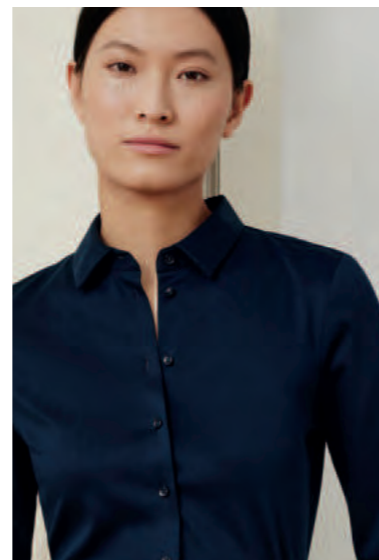
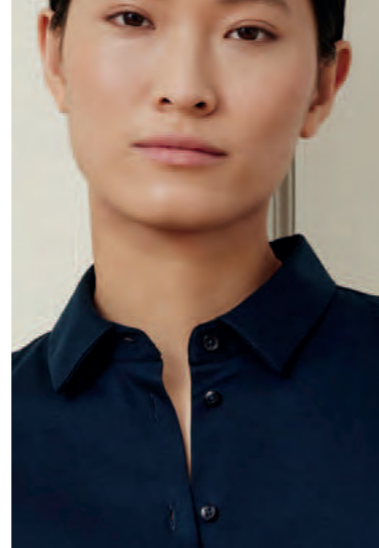
black 215939-YS82-67cm

215939-JS82-65cm



Jersey Shirt

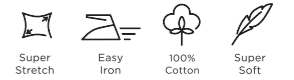
Smooth jersey, guaranteed to make you feel good.
100% softest cotton.
For stylish yet comfortable looks.



Jersey Shirt

A knitted fabric with natural flexibility.

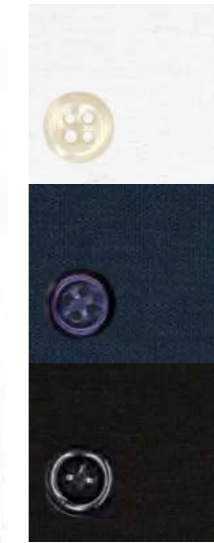
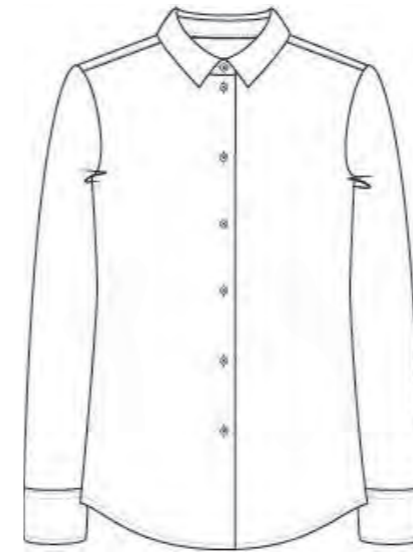
100% cotton
opacity: high
170 g/m²



Price **10**

Fitted

34-46



white **515800-DF05-62cm**

navy **515819-DF05-62cm**

black **515839-DF05-62cm**



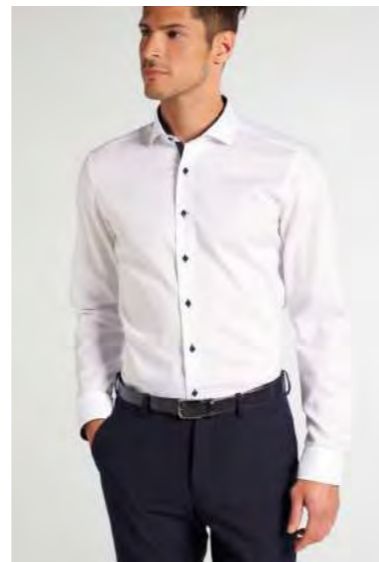
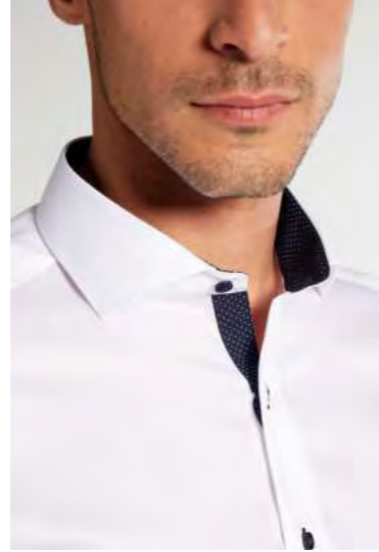
Business Additional

Small details can make a big impact when it comes to creating a sophisticated business look. The right shirt, with carefully considered details, can elevate your appearance and project an air of professionalism and attention to detail.



Oxford

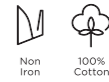
The pinpoint cotton shirt with patches.



Oxford

The pinpoint cotton shirt.

100% cotton
opacity: high
123 g/m²

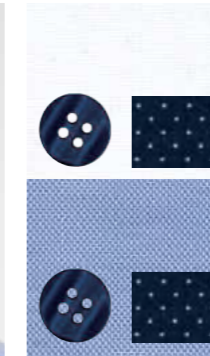


Cutaway Collar

Price **6**

Slim Fit

37-46
1 sizes 38-46



white **810000-F132-67cm**

blue **810012-F132-67cm¹**

Kent Collar

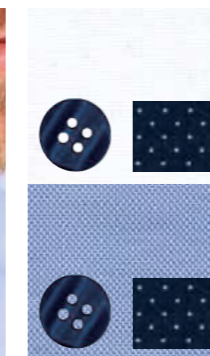
Price **6**

Modern Fit

38-46, 48

Comfort Fit

40-50, 52, 54



white **810000-X13K-65cm**
810000-C13K-27cm ^{1/2}
sleeve length
810000-X13K-68cm

blue **810012-X13K-65cm**
810012-C13K-27cm ^{1/2}
sleeve length
810012-X13K-68cm

with pocket

810000-E137-65cm
810000-K137-28cm ^{1/2}

810012-E137-65cm
810012-K137-28cm ^{1/2}
sleeve length
810012-E137-68cm

^{1/2} 1/2-Arm



Oxford

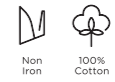
The pinpoint cotton blouse with patches.



Oxford

The pinpoint cotton blouse.

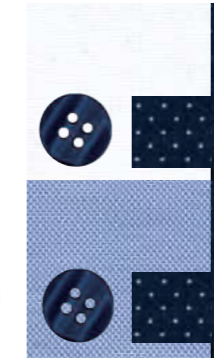
100% cotton
opacity: high
123 g/m²



Price **6**

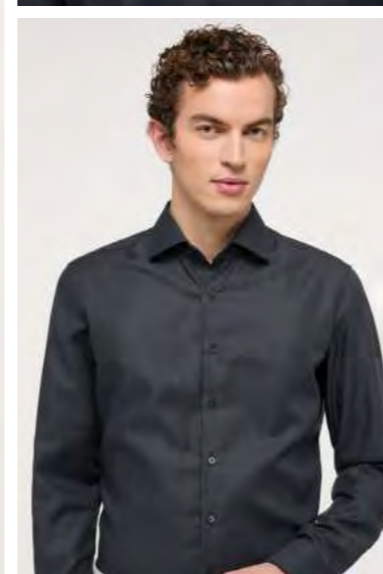
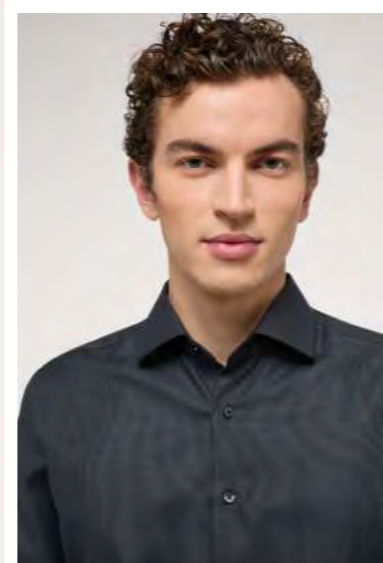
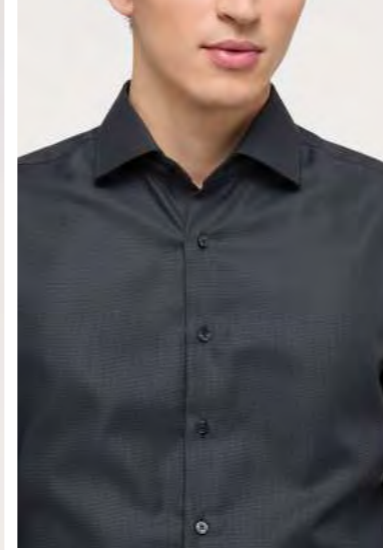
Regular

34-54



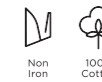
white 541900-D791-614-63cm

blue 541912-D791-614-63cm



Structured Twill
The soft cotton shirt.

100% cotton
126 g/m²



Kent Collar

Price **7**

Slim Fit
38-44



blue **311612-F159-67cm**

grey

rosé

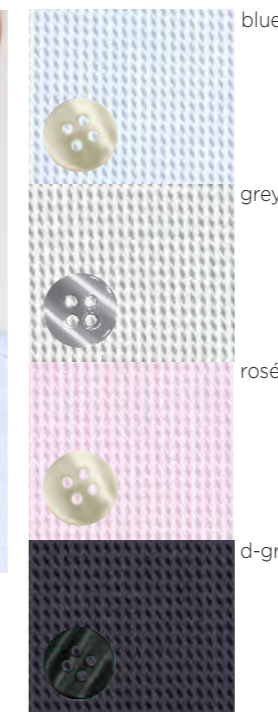
d-grey **311638-F159-67cm**

Kent Collar

Price **7**

Modern Fit
38-46, 48

Comfort Fit
40-50, 52, 54
¹ sizes 40-48



blue **311612-X169-65cm**

grey **311632-X169-65cm**

rosé **311650-X169-65cm**

d-grey **311638-X169-65cm**

311612-E169-65cm

311632-E169-65cm

311638-E169-65cm¹

with pocket



Striped

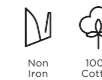
The cotton striped shirt with superior details.



Striped Twill

The cotton shirt with superior details.

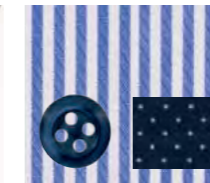
100% cotton
116 g/m²



Kent Collar

Price **4**

Slim Fit
38-44



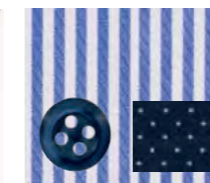
blue 899216-F140-67cm

Kent Collar

Price **4**

Modern Fit
38-46, 48

Comfort Fit
40-50, 52, 54



blue 899216-X14P-65cm

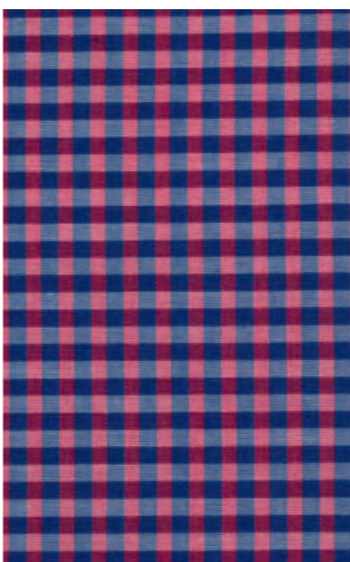
with pocket

899216-E15P-65cm



Vichy Check

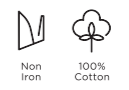
Our elegant Button-Down collar is paired with a classic Vichy check pattern in a clean design.



Vichy Check

A classic Vichy check with superior details.

100% cotton
114 g/m²



Button Down

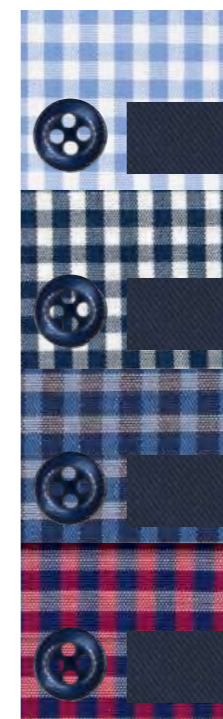
Price **4**

Modern Fit

38-46, 48

Comfort Fit

40-50, 52, 54



blue-white

891312-X146-65cm

891312-E146-65cm

navy-white

891316-X146-65cm

891316-E146-65cm

blue-navy

891309-X146-65cm

891309-E146-65cm

red-navy

891358-X146-65cm

891358-E146-65cm

with pocket



Accessories

A crucial element in upgrading a man's outfit: Add a touch of sophistication and elegance to your styling and elevate even the most basic looks with the right accessories.



T-shirts

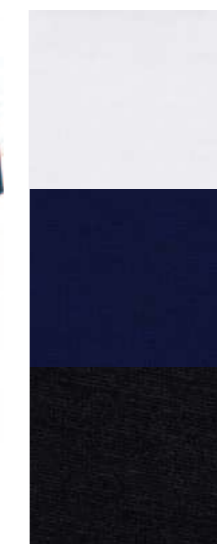
Tino

70% cotton
30% lyocell

Round Neck

Price **T2**

S-3XL



white 88700-TINO

navy 88718-TINO

black 88739-TINO

1863
by
ETERNA

Socks



schwarz | black
60039

anthrazit | dark grey
60035

navy
60019

Price **S**

Art.: 600
Size: 39 - 42 / 43 - 46 / 47 - 48
Colour: 39/35/19

98% Cotton
2% Elastane

Standard Measurement Chart

Measuring track	S	M	L	XL	XXL	3XL
Chest measurement	100	106	114	122	134	146
Body length	68	70	71	73	75	77



1863
— by —
ETERNA

WWW.CF.ETERNA.DE



ETERNA Mode GmbH | Medienstraße 12 | 94036 Passau | Germany
Court of registration: Passau
Commercial register number: HRB 6989
CEO: Henning Gerbaulet

<https://unternehmen.eterna.de/>



A•S•Aktuell AG

Luxemburger Str. 15, 53842 Troisdorf
Telefon: +49 (0) 22 41/2 58 83 55
e-mail: info@as-aktuell.de | internet: www.as-aktuell.de